

American Legion Post 245: Design Project



Existing Conditions

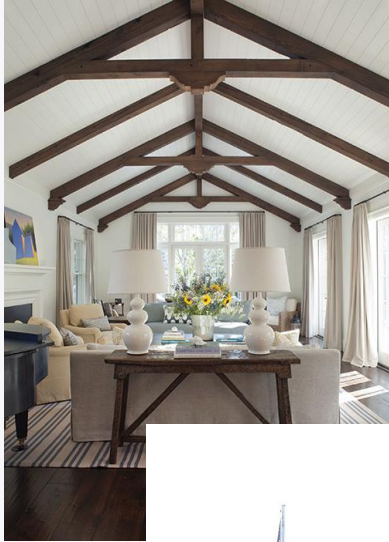


Floor Plan Requirements

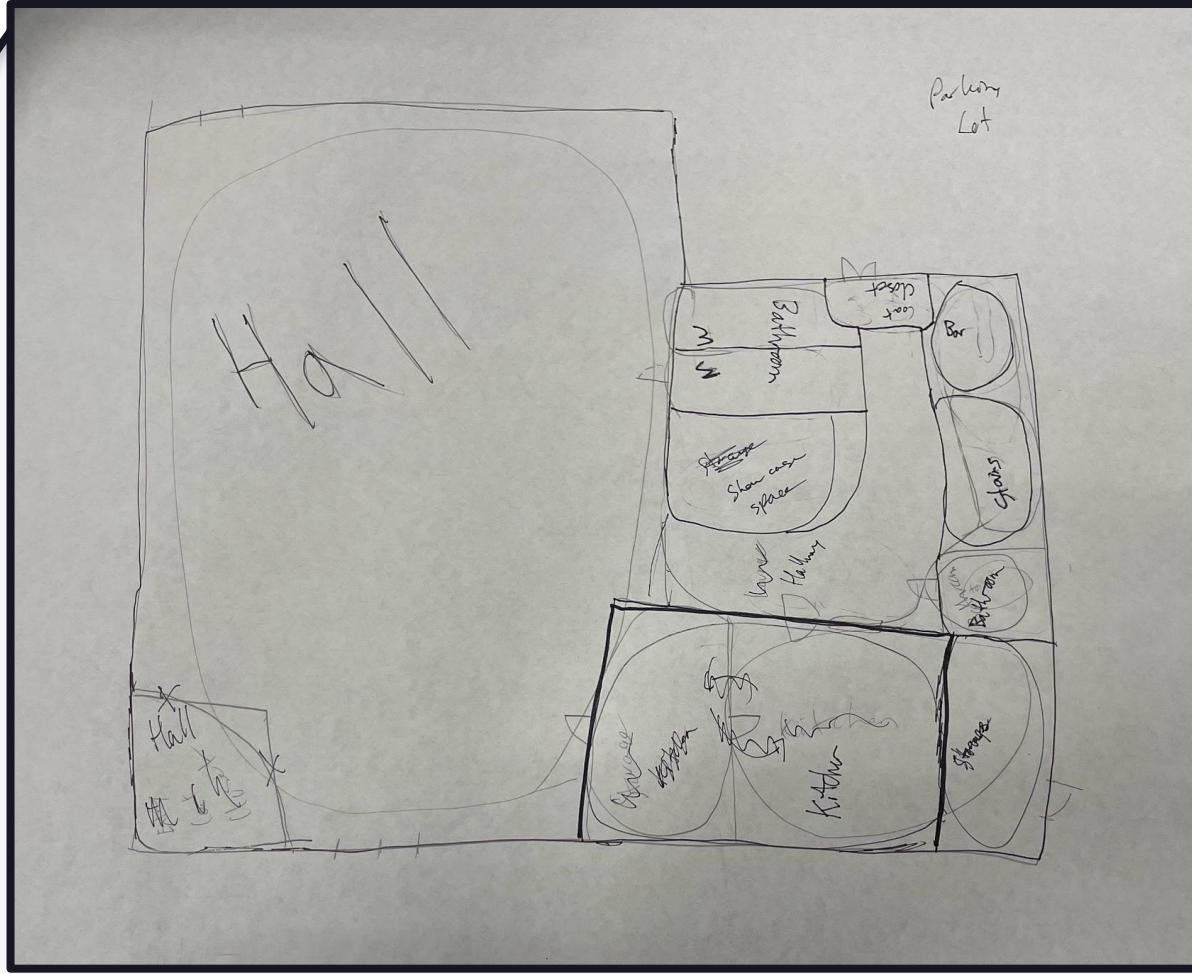
- Kitchen
 - Sink
 - dishwasher
 - fridge
 - freezer
 - counter space/prep area
- Main space/meeting hall - priority
 - 150 people
 - tables and chairs
 - big, open space

- Storage closets
 - Broom/mop closet
 - Beverage storage
- Basement
 - Basement stairs
- Bar area - smaller than before
- Display Area
- Entrance ramp
- Bathrooms
 - Handicap accessible

Inspiration Images 2



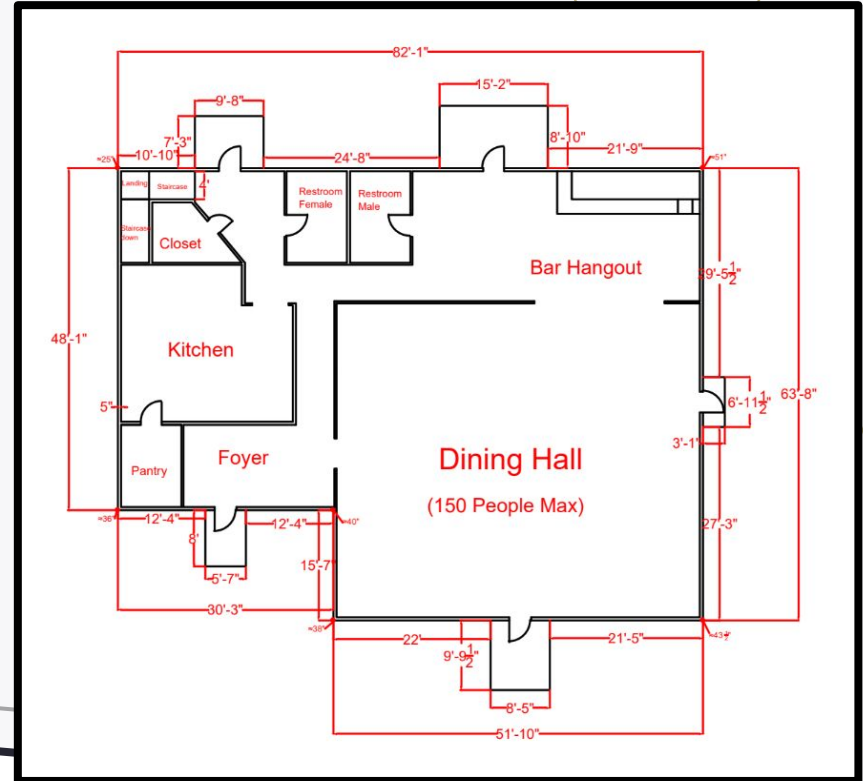
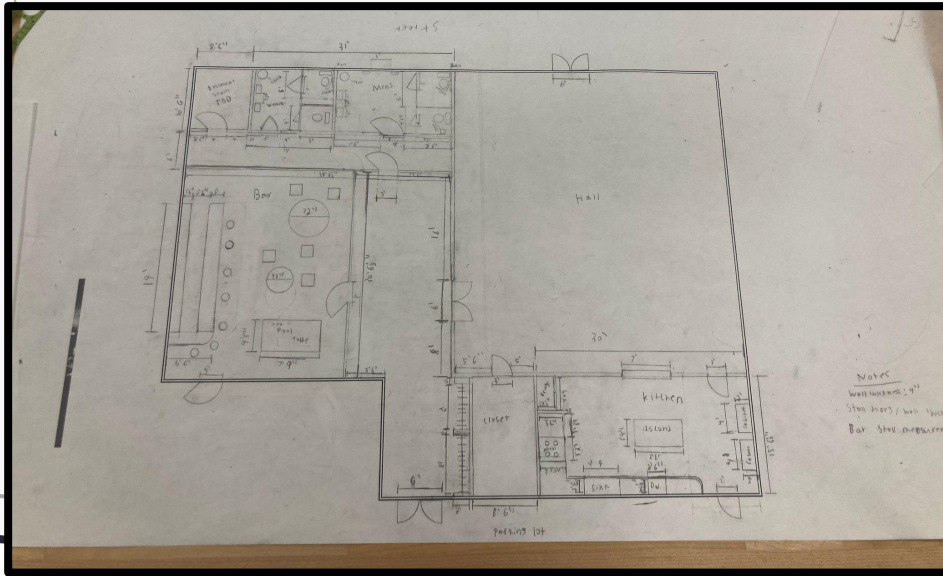
Bubble Diagrams (Team Ainesh)



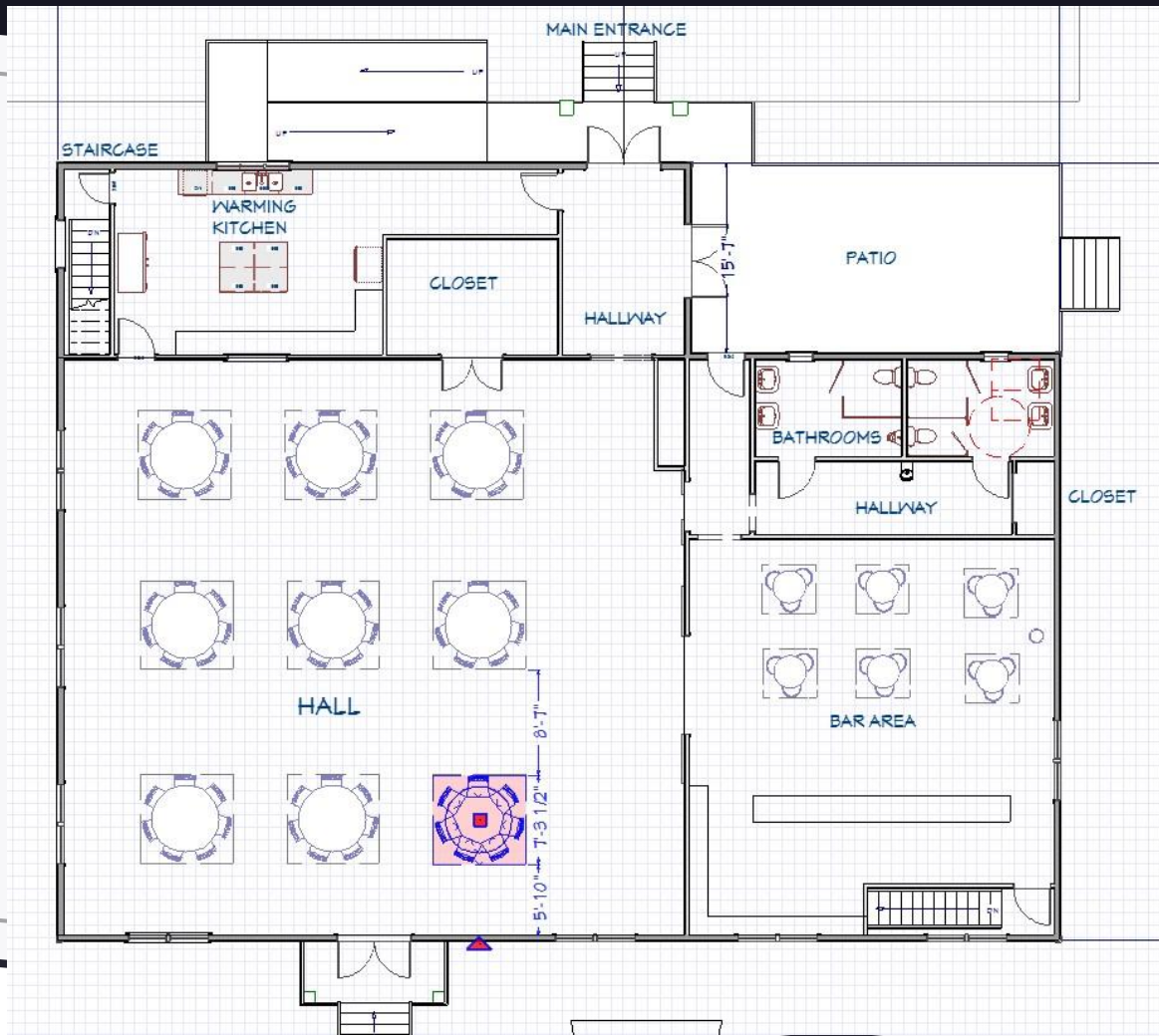
Feedback:

- Lounge not needed
- Kitchen accessibility is not great (should change location)
- Grouped bathrooms is good
- Hall space is good

Floor Plans from Design Meeting 1



Current Floor Plan

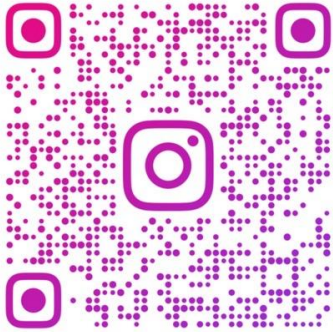








Follow Our Progress!



@JT_DESIGNSTUDIO

DESIGN FOR COMMUNITY



DESIGN
JT
STUDIO

FOLLOW US @
JT_DESIGNSTUDIO

The background features a dark blue top section that transitions into a light grey area with wavy, horizontal lines. Two gold circles are positioned on the left and right sides, each connected to the top edge by a thin gold line. Small grey L-shaped and plus symbols are scattered around the central text.

Questions & Comments